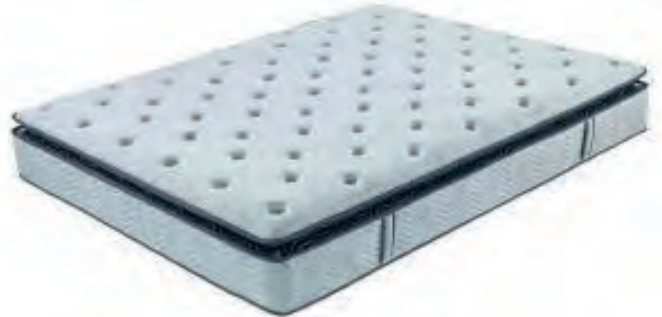


Sweet Dreams

The Sweet Dreams mattress features Bonnell spring system & thick layers of memory foam, knit stretch & fibre. Available in queen or king size.



dimensions (mm)

King Bed	1830(W) x 2030(L) x 215(H)
Queen Bed	1530(W) x 2030(L) x 215(H)

warranty

5 YEAR WARRANTY

This product carries a 5 year manufacturer's warranty against faulty materials or workmanship during normal wear and tear, including:

Coils or wires that protrude, loosen, break or rip through mattress fabric

Body indentations of 35mm or greater

Sagging - provided mattress is used on matching foundation with appropriate frame

This warranty does not extend to mattress fabric (e.g. stains, soiling or burns), normal wear or tear caused by misuse or negligence, or damage caused by lack of compliance with manufacturer's instructions or improper use of foundation or frame.



By DeZign Pty Ltd. | ABN: 54 527 760 665
Auburn Ph: (02) 9648 4922 | Fax: (02) 9748 6745
Artarmon Ph: (02) 8019 6849 | Fax: (02) 8019 6854

www.bydezign.com.au

Sweet Dreams

quilt layers

Knit stretch - 100% polyester, 280g

Foam - 2cm, 20 density

Fiber

comfort layers

3 zoned support - provides additional comfort for sleepers who require a firm support for the spinal section of their body. The torso section of the mattress will be slightly firmer than the head and feet sections in order to accommodate different pressure needs of a body. 3-zoned support will also offer long-lasting reassurance that the most pressured parts of the mattress will sustain its firmness for a longer period of time.

memory foam - contours to sleeper's body in response to heat and pressure, evenly distributing body weight. It offers supreme comfort and pressure-point relief.

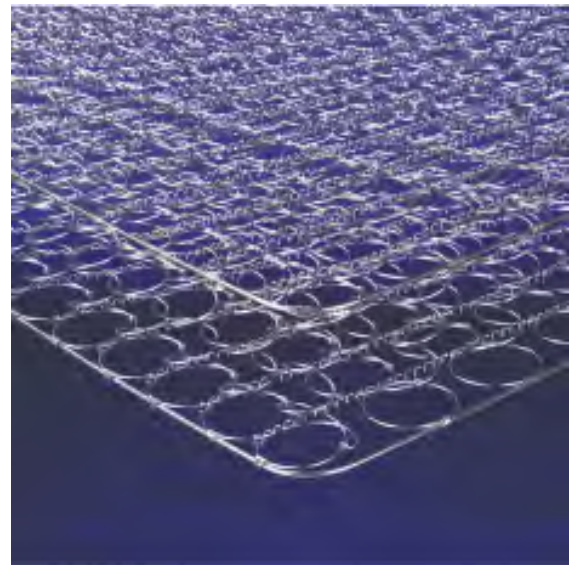
support system

isolated pad - blocks out any noise generated from the metal springs rubbing against each other.

Bonnell coils - 2.3m gauge



Memory Foam



Bonnell Springs



By DeZign Pty Ltd. | ABN: 54 527 760 665
Auburn Ph: (02) 9648 4922 | Fax: (02) 9748 6745
Artarmon Ph: (02) 8019 6849 | Fax: (02) 8019 6854

www.bydezign.com.au